

BP SERIES WEIGHING BEAMS



Pair of sturdy and versatile modular weighing bars, easy to fit under any type of weighing structure. These are suitable for weighing rigid structures (hoppers, conveyor belts, roller units, tanks, crates, etc.). Standard version is with approved load cell.

MAIN FEATURES

- Functions with 4 IP68 STAINLESS steel shear-beam approved load cells (BPL) and with 2 aluminium off-center approved load cells (BPS-BPM-BPX), made according to OIML R60 standards with protection against dust and moisture according to IP65 standards (350 Ohm input resistance).
- The structure is made in section and sheet oven-fire painted carbon steel, fitted with articulated joints for compensating the bending and/or expansion of the structure to be weighed, and with stops for protection from accidental bumps.
- Screened 3m long 4-pin cable for connecting each bar with the fitted junction box.
- Up to 15 Vdc power supply.
- IP67 hermetic equalised junction box with screened 5m long 6-pin cable with connectors for connection to the indicator.
- The STAINLESS STEEL model has the structure, mechanics, and trinkets in AISI304 and the load cells are treated with an anticorrosion treatment.

OPTIONS ONLY AVAILABLE AT TIME OF ORDER

- Connection to the indicator and calibration with CE-M 3000e single range or 3000e+3000e dual range approval (with indicators of our production).
- High resolution model for internal factory use.

OPTIONS FOR ATEX VERSION

- CCATEX: ATEX certificate for each load cell.
- JB4QA: ATEX certified junction box.
- DCATEXMECH: Declaration of conformity of the whole system composed of PLATFORM + JUNCTION BOX + LOAD CELLS (only if the platform is ordered without the weight indicator; otherwise, refer to the certifications available for the indicator to which it will be connected).

Available versions

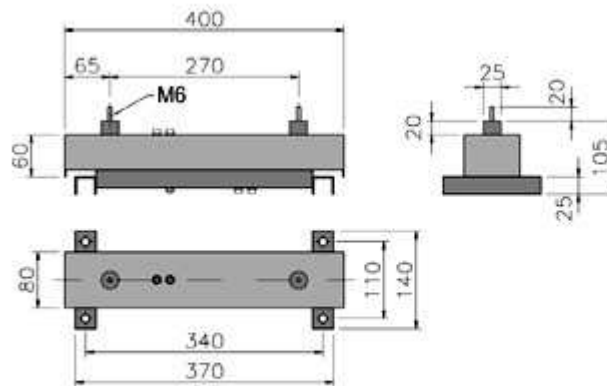
Code	Resting Surface mm	Max Capacity kg	Height mm	Standard Division g	CE-M Division g (*)	CE-M2 Division g (*)	HR Division g (*)
BPS15	400x80	15	85+20	2	5	--	1
BPS30	400x80	30	85+20	5	10	5-10	2
BPS60	400x80	60	85+20	10	20	--	5
BPS150	400x80	150	85+20	20	50	20-50	10
BPM60	600x105	60	130	10	20	10-20	5
BPM150	600x105	150	130	20	50	20-50	10
BPM300	600x105	300	130	50	100	50-100	20
BPX150	800x135	150	130	20	50	20-50	10
BPX300	800x135	300	130	50	100	50-100	20
BPX600	800x135	600	130	100	200	100-200	50
BPL600	1200x150	600	120	100	200	100-200	50
BPL1500	1200x150	1500	120	200	500	200-500	100
BPL3000	1200x150	3000	120	500	1000	500-1000	200
BPL6000	1200x150	6000	120	1000	2000	1000-2000	500

(*) These divisions are obtainable only with the relative options

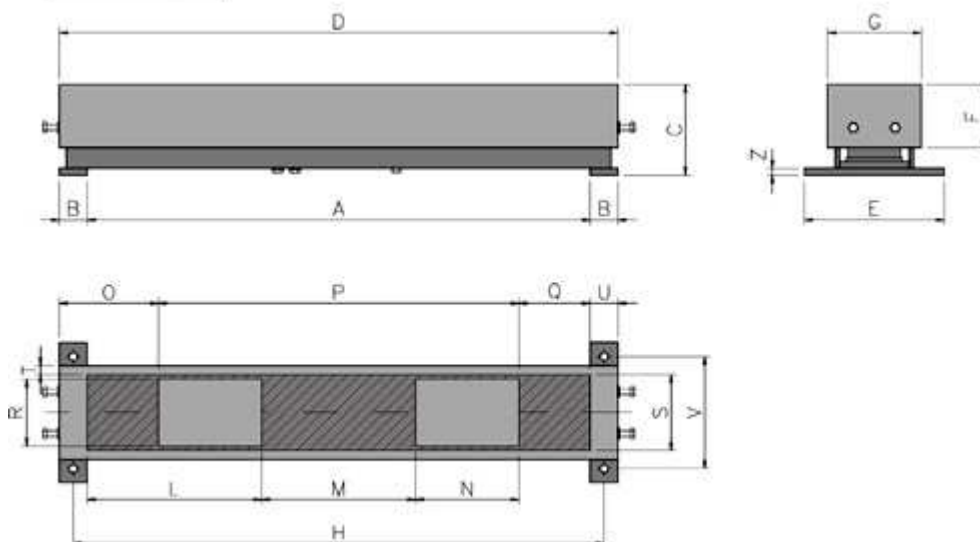
Options only available at time of order

Code	Description
BPCEM1	Connection to indicator and calibration with CE-M 3000e approval (with feet and level)
BPCEM2	Connection to indicator and calibration with CE-M 2x3000e approval (with feet and level)
HR	High resolution (HR) model
CCATEX	ATEX certificate for each load cell for the following categories: II 1G EExia IIC T6 (Ta -20÷+40°C) TX (Ta -20÷+65°C) II 1D tD A20 TX°C (Ta -20÷+40°C) TX°C (Ta -20÷+65°C).
JB2QAI	Junction and equalisation box with 2 inputs, for ATEX environments, in IP66 stainless steel. Protection degree: II 2G EEx ib IIC T6 for gases. II 2D Ex tD A21 IP65 T115°C for dust.
JB4QA	Junction and equalisation box with 4 inputs, for ATEX environments, in IP67 ABS. Protection degree: II 2G EEx ib IIC T6 for gases. II 2D Ex tD A21 IP65 T115°C for dust.
DCATEXMECH	DECLARATION OF ATEX CONFORMITY OF WHOLE Ex II 2GD SYSTEM with relative WHOLE SYSTEM LABEL, for mechanical structure with ATEX load cells (each cell must be certified with CCATEX option).

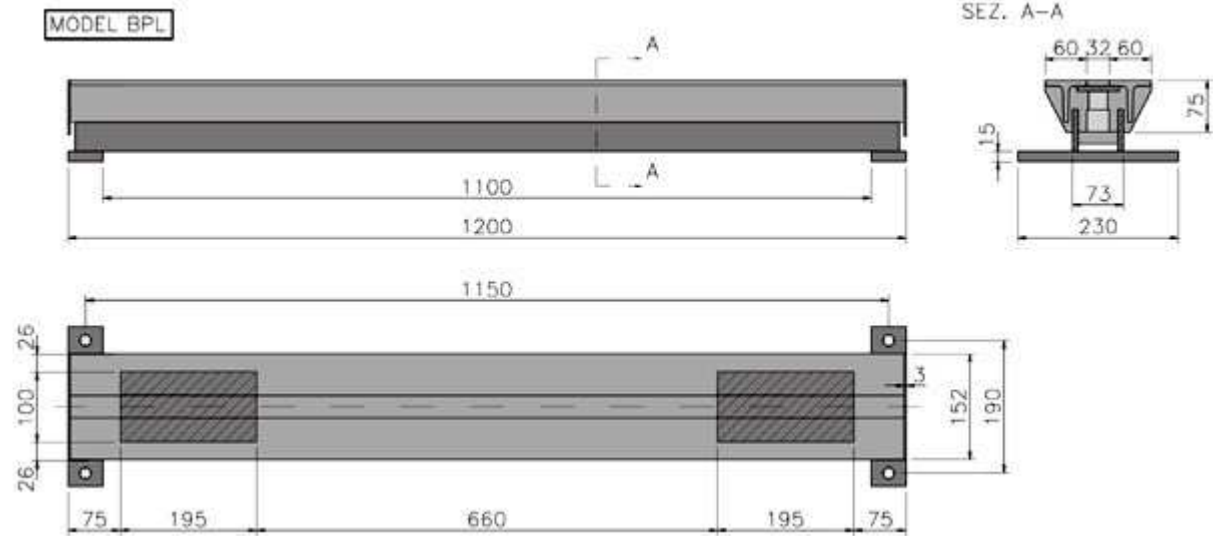
MODEL BPS



MODEL BPM/BPX



	A	B	C	D	E	F	G	H	L	M	N	O	P	Q	R	S	T	U	V	Z
BPM	520	40	130	600	170	90	105	560	182.5	160	107.5	112.5	375	75	70	82	11.5	37.5	130	10
BPX	720	40	130	800	200	90	134	760	250	220	148	142	516	102	96	108	13	40	160	10



DIMENSIONS IN MM

□ Areas which may be perforated ▨ Areas which may not be perforated