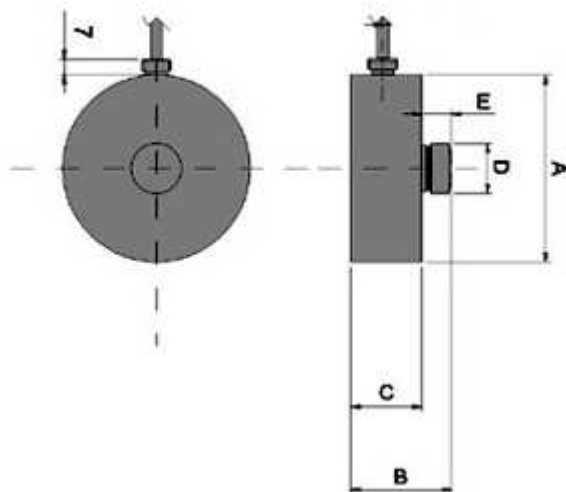


## CP SERIES LOW PROFILE LOAD CELLS

Stainless steel compression load cells suitable for weighing tanks and hoppers with the relevant accessories.



Made according to OIML R60 standards



| DIMENSION | CAPACITY                   |          |          |
|-----------|----------------------------|----------|----------|
|           | 2500, 5000, 7500, 10000 kg | 15000 kg | 30000 kg |
| A         | 82                         | 100      | 126      |
| B         | 44                         | 48,5     | 54       |
| C         | 31                         | 35       | 40       |
| D         | 22                         | 28       | 35       |
| E         | 13                         | 13,5     | 14       |

### MAIN FEATURES

- LOW PROFILE
- STAINLESS STEEL CONSTRUCTION
- IP68 PROTECTION
- MAX. CAPACITIES FROM 2500 TO 30000 kg
- SHIELDED CONNECTION CABLE

### TECHNICAL FEATURES

- Full Scale Output: 2mV/V +/- 0,5%
- Non-Repeatability: 0,01% F.S.
- Temperature effect on zero: 0,02% / 10°C
- Temperature effect on full scale output: 0,02% / 10°C
- Compensated Temperature Range: -10°C/+50°C
- Operating Temperature Range: -20°C/+60°C
- Creep error after 30 minutes: 0,02% F.S.
- Maximum tolerated excitation voltage: 10 VDC
- Input Resistance: 750 ± 10 Ohm
- Output Resistance: 700 ± 5 Ohm
- Zero Balance: +/-1% F.S.
- Insulation Resistance: >5000 MOhm
- Safe Overload: 120% F.S.
- 4-wire shielded cable, 6m long, 5 mm diameter

### EXTRAS AVAILABLE

- Assembly kit
- II 1GD ATEX Certificate for each load cell
- Declaration of ATEX conformity of the system (for the code see the pages of the atex weight indicators and MB4 atex barrier kit)

| Wiring Code |          |
|-------------|----------|
| Colour      | Function |
| --          | SHIELD   |
| GREEN       | OUTPUT + |
| RED         | INPUT +  |
| WHITE       | OUTPUT - |
| BLACK       | INPUT -  |

### Models Available

| Code    | Max Capacity kg | Masterpack 4 pcs |
|---------|-----------------|------------------|
| CP1000  | 1000            | CP1000C          |
| CP2500  | 2500            | CP2500C          |
| CP5000  | 5000            | CP5000C          |
| CP7500  | 7500            | CP7500C          |
| CP10000 | 10000           | CP10000C         |
| CP15000 | 15000           | CP15000C         |
| CP30000 | 30000           | CP30000C         |

#### Options to be specified at time of order

| Code      | Description   |
|-----------|---|
| CCATEX    | ATEX certificate for each load cell for the following categories:<br>II 1G EExia IIC T6 (Ta -20÷+40°C) TX (Ta -20÷+65°C)<br>II 1D tD A20 TX°C (Ta -20÷+40°C) TX°C (Ta -20÷+65°C).   |
| DCATEXMB4 | DECLARATION OF ATEX CONFORMITY OF WHOLE Ex II 2GD IIC T6 T125°C SYSTEM, with relative LABEL OF WHOLE SYSTEM, for NON ATEX weight indicator connected to MB4 Dini Argeo zener barriers, connected to mechanical structure with ATEX load cells (each cell must be certified with CCATEX option). |

#### Assembly kits

| Code   | Description  |
|--------|--|
| KCPN10 | Stainless steel assembly kit made up of overturn-proof screw jacks for CP cells from 1000 kg to 10000 kg |
| KCPN15 | Stainless steel assembly kit made up of overturn-proof screw jacks for CP cell of 15000 kg               |
| KCPN30 | Stainless steel assembly kit made up of overturn-proof screw jacks for CP cell of 30000 kg               |