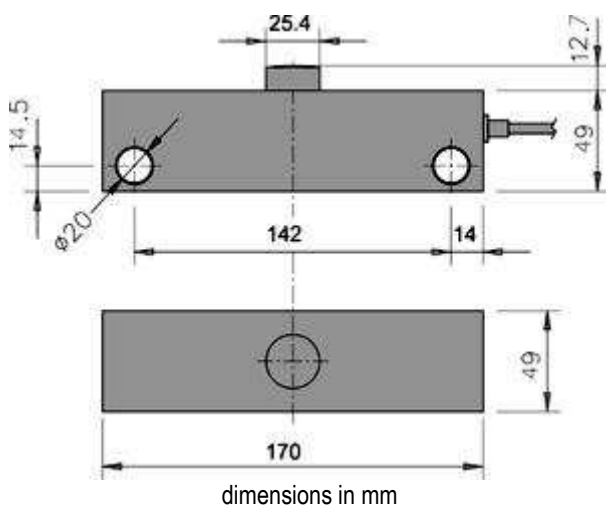


DSBI SERIES DOUBLE SHEAR BEAM STAINLESS STEEL LOAD CELLS



| Wiring Code | |
|-------------|----------|
| Colour | Function |
| GREEN | OUTPUT + |
| PURPLE | SENSE + |
| RED | INPUT + |
| WHITE | OUTPUT - |
| BLACK | INPUT - |
| GREY | SENSE - |

Stainless steel double shear beam load cells suitable for building, for example, to make CE-M approved scales for high capacities or for weighing tanks and hoppers with the relevant accessories. High accuracy also with the expansion of the weighing structures.

MAIN FEATURES

- Minimum load cell verification interval: $V_{min} = E_{Max} / 10.000$
- Combined error 0,03% of Full Scale Output (F.S.)
- Full Scale Output: 2mV/V +/- 0,1%
- Temperature effect on zero: 0,00116% /°C
- Temperature effect on full scale output: 0,00097% /°C
- Compensated Temperature Range: -10°C/+40°C
- Operating Temperature Range: -30°C/+85°C
- Creep error after 240 minutes: <0,02% F.S.
- Maximum tolerated excitation voltage: 15 VDC
- Input Resistance: $700 \pm 7 \text{ Ohm}$
- Output Resistance: $700 \pm 7 \text{ Ohm}$
- Zero Balance: +/- 1% F.S.
- Insulation Resistance: >5000 MOhm
- Safe Overload: 150% F.S.
- Ultimate Overload: >300% F.S.
- 4-wire shielded cable, 15m long

TECHNICAL FEATURES

- C4 PRECISION CLASS
- 17-4 PH STAINLESS STEEL CONSTRUCTION
- IP68 PROTECTION
- MAX. CAPACITIES FROM 10000 TO 30000 kg
- SHIELDED CONNECTION CABLE
- TEST CERTIFICATE AVAILABLE UPON REQUEST

EXTRAS AVAILABLE

- Assembly kit
- II 1GD ATEX Certificate for each load cell
- Declaration of ATEX conformity of the system (for the code see the pages of the atex weight indicators and MB4 atex barrier kit)

Models available

| Code | Max Capacity kg | Masterpack 4 pcs |
|--------|-----------------|------------------|
| DSBI10 | 10000 | DSBI10C |
| DSBI20 | 20000 | DSBI20C |
| DSBI30 | 30000 | DSBI30C |

Options to be specified at time of order

| Code | Description |
|-----------|---|
| CCATEX | ATEX certificate for each load cell for the following categories: II 1G EExia IIC T6 (Ta -20÷+40°C) TX (Ta -20÷+65°C) II 1D tD A20 TX°C (Ta -20÷+40°C) TX°C (Ta -20÷+65°C). |
| DCATEXMB4 | DECLARATION OF ATEX CONFORMITY OF WHOLE Ex II 2GD IIC T6 T125°C SYSTEM, with relative LABEL OF WHOLE SYSTEM, for NON ATEX weight indicator connected to MB4 Dini Argeo zener barriers, connected to mechanical structure with ATEX load cells (each cell must be certified with CCATEX option). |

Assembly kit

Code Description

KDSBN Stainless steel assembly kit made up of overturn-proof screw jacks for DSBI load cells up to 30000kg capacity.