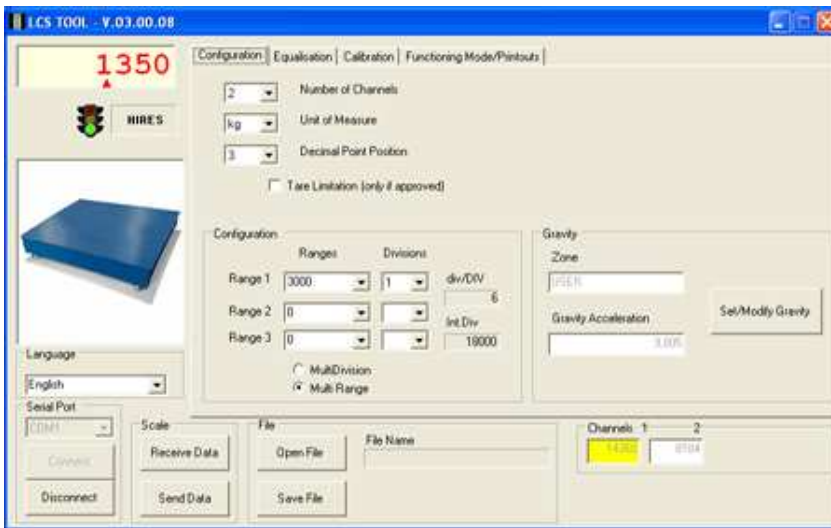


LCSTOOL: MANAGEMENT OF THE LCS INSTRUMENTS



"Configuration" Menu



"Calibration" Menu

Software which allows to manage the configuration of the LCS instruments.

DESCRIPTION

- Software for managing the LCS instruments: by receiving and transmitting the instrument data from PC, it's possible to save and recall the desired configurations and/or transfer these on the same instrument.

MAIN FUNCTIONS

- Configuration of the set-up parameters: the LCSTool allows to modify/transmit/receive all the parameters of the connected scale, with a subsequent saving of the executed configuration; possibility of exporting/importing the configurations on a file.
- Calibration of the scale, which includes:
 - **Calibration with use of sample weights**, with possibility of linearising the system up to 8 points; graphic visualisation of the calibration.
 - **Digital equalisation of the cells** for the multichannel configurations.
- **On-line check of the channels of the connected scale**, for a simple and quick diagnosis of the system.
- On-line visualisation of the weight on the scale.
- Selection of the programme language; organisation of the texts in files subdivided by language allowing to easily create/modify additional languages.

PC MINIMUM REQUIREMENTS

- Pentium IV or equivalent - 256 Mb Ram
- 200 MB of empty space on disk
- Windows XP
- Internet Explorer 6.0 SP1 or greater
- Monitor with 800x600 minimum resolution, 256 colours
- A RS232 serial port