

## RSB DOUBLE SHEAR BEAM LOAD CELLS



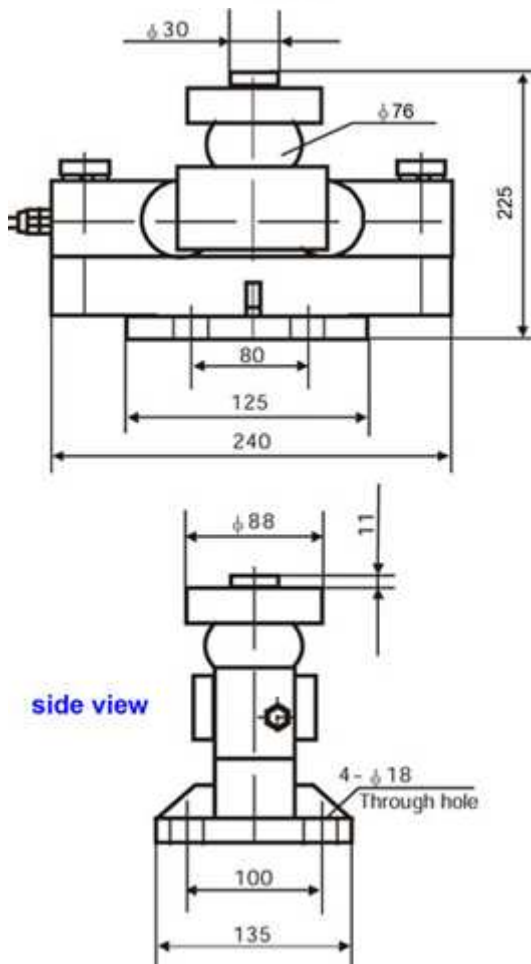
Double shear beam load cells particularly suitable for weighing weigh bridges, dosage systems, tanks, silos, etc., complete of support and oscillating sphere joint. CE-M approved.

### MAIN FEATURES

- C3 PRECISION CLASS;
- EXECUTED IN NICKEL-PLATED STEEL WITH LASER SOLDERINGS;
- HIGH PRECISION AND LINEARITY ALSO WITH NON PERPENDICULAR LOADS;
- OPTIMISED FOR PARALLEL CONNECTION;
- IP68 PROTECTION DEGREE;
- UP TO 25000kg CAPACITY;
- SHIELDED TEFLON CONNECTION CABLE;
- TEST CERTIFICATE AVAILABLE UPON REQUEST.

### TECHNICAL FEATURES

- Minimum verification interval:  $V_{min} = E_{Max} / 10.000$ ;
- Maximum number of load cell divisions:  $n_{LC}=3000$  (C3);
- Full Scale Output:  $2mV/V \pm 0,2\%$ ;
- Temperature effect on full scale output:  $0,0014\%FS/^\circ C$ ;
- Temperature effect on the zero:  $\pm 0,0017\%FS/^\circ C$ ;
- Compensated temperature range:  $-10^\circ C/+40^\circ C$ ;
- Operating temperature range:  $-35^\circ C/+65^\circ C$ ;
- Creep error after 30 minutes:  $0,02\% F.S.$ ;
- Excitation voltage: from 5 to 18 VDC;
- Input Resistance:  $700 \pm 7 \text{ Ohm}$ ;
- Output Resistance:  $700 \pm 7 \text{ Ohm}$ ;
- Zero Balance:  $\pm 1,5\% F.S.$ ;
- Insulation resistance  $> 5000 \text{ MOhm}$ ;
- Safe overload  $> 150\% F.S.$ ;
- Maximum overload  $> 300\% F.S.$ ;
- 4-wire shielded cable, 12m long.



### Wiring Code

Colour	Function
--	SHIELD
GREEN	OUTPUT +
RED	INPUT +
WHITE	OUTPUT -
BLACK	INPUT -

### Available versions

Code	Max Capacity kg	Masterpack 4 pcs
RSB25C3	25 000	RSB25C3C