

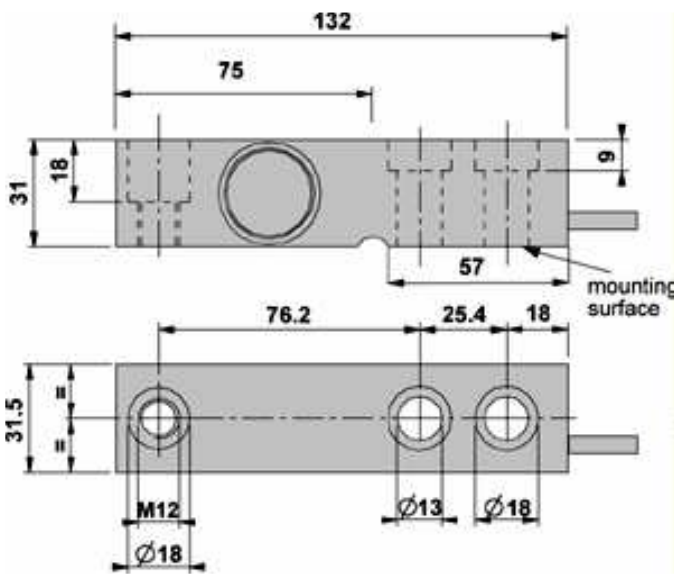
SBX-1K SERIES SHEAR BEAM LOAD CELLS, from 500kg to 2 000kg



Stainless steel approved shear beam load cells, with capacities from 500kg to 2 000kg, with IP68 protection. Particularly suitable for creating CE-M approved scales with 4 load cells, or, with the aid of its accessories, for weighing tanks and hoppers.

DIMENSIONS - DECODING STANDARD CABLE

NOTE: dimensions in mm



Decoding of the standard cable colours

| Colour | Function |
|--------|----------|
| -- | SHIELD |
| YELLOW | OUTPUT + |
| GREY | SENSE + |
| BROWN | INPUT + |
| WHITE | OUTPUT - |
| GREEN | INPUT - |
| PINK | SENSE - |

MAIN FEATURES

- 17-4 PH STAINLESS STEEL CONSTRUCTION
- IP68 PROTECTION
- MAX. CAPACITIES FROM 500 TO 2 000 kg
- SHIELDED CONNECTION CABLE
- TEST CERTIFICATE AVAILABLE UPON REQUEST

TECHNICAL FEATURES

- Minimum load cell verification interval: $V_{min} = E_{Max} / 10.000$
- Maximum number of verification intervals: $nLC = 3000$
- Combined error 0,017% of Full Scale Output (F.S.)
- Full Scale Output: 2mV/V +/- 0.5%
- Temperature effect on zero: 0,02% / 10°C
- Temperature effect on full scale output: 0,02% / 10°C
- Compensated Temperature Range: -10°C/+50°C
- Operating Temperature Range: -20°C/+60°C
- Creep error after 30 minutes: 0,02% F.S.
- Maximum tolerated excitation voltage: 10 VDC
- Input Resistance: $1100 \pm 20 \text{ Ohm}$
- Output Resistance: $1000 \pm 20 \text{ Ohm}$
- Insulation Resistance: >5000 MOhm
- Safe Overload: 150% F.S.
- Ultimate Overload 300% F.S.
- 6-wire screened cable, 3m long, 5 mm diameter

EXTRAS AVAILABLE

- II 1GD ATEX Certificate for each load cell
- Declaration of ATEX conformity of the system (for the code see the pages of the atex weight indicators and MB4 atex barrier kit).

Available models

| Code | Max Capacity kg |
|---------------------|-----------------|
| SBX500-1K M | 500 |
| SBX1000-1K M | 1 000 |
| SBX2000-1K M | 2 000 |

Extras available

| Code | Description |
|-----------|---|
| CCATEX | ATEX certificate for each load cell for the following categories: II 1G EExia IIC T6 (Ta -20÷+40°C) TX (Ta -20÷+65°C) II 1D tD A20 TX°C (Ta -20÷+40°C) TX°C (Ta -20÷+65°C). |
| DCATEXMB4 | DECLARATION OF ATEX CONFORMITY OF WHOLE Ex II 2GD IIC T6 T125°C SYSTEM, with relative LABEL OF WHOLE SYSTEM, for NON ATEX weight indicator connected to MB4 Dini Argeo zener barriers, connected to mechanical structure with ATEX load cells (each cell must be certified with CCATEX option). |

Assembly kits

| Code | Description |
|------|--|
| KSB2 | Assembly kit in stainless steel for shear beam load cells from 250 kg to 2000 kg |